



# ARCH - DE - VILLA

Retrofitting Iconic Architecture Challenge

<http://competitions.uni.xyz>



[img\\_1](#): Guided Tours at Villa Savoye.

# Premise

**Le Corbusier**, the well renowned Swiss-French Architect was one of the pioneers for what we refer to as **Modern Architecture**. **Villa Savoye**, a modernist villa designed by him is the epitome of understanding Modernist ideas. It is considered an excellent example to explicitly study the application of The Five Points of Architecture as given by Corbusier. The architect often stated, **“The house is a machine for living”**. This Villa is an implication of the same idea.

Although this Machine for Living could not be used to serve for it’s designated purpose for long, still this monument, built in the 1930s continue to inspire people from the realm of Architecture worldwide even today.



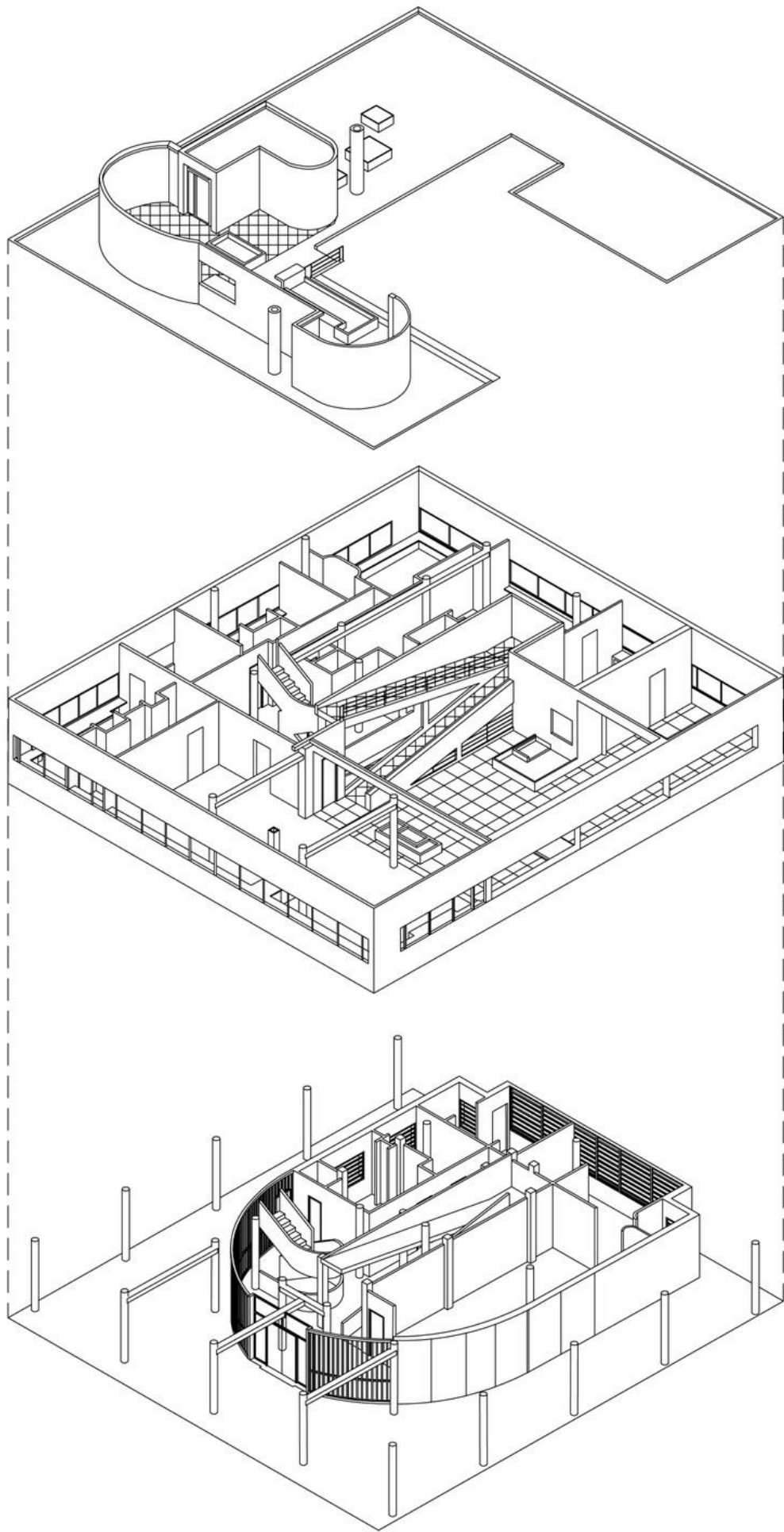
Img\_2: Living Area in Villa Savoye.

# Insight

Villa Savoye was built between 1928 and 1931 in Poissy which is one of the suburbs of Paris. The house was originally designed for the Savoye family as a country retreat. However, it was later purchased by the neighbouring school post World War 2 in 1958. Several proposals were made to demolish it but it was saved and in 1965 it was designated as an official French historical monument. Later in July 2016, it was also registered as **UNESCO World Heritage Site**.

The **spatial planning** at the ground level is a reflection of the Architect's interest in Technology. He tried to redefine the notions of the functions of a traditional house built during that time to aspire for modern living for the Savoye family. An entrance hall, garage and rooms for the chauffeur and maid completes the ground floor. Whereas all the private areas including three bedrooms (including master bedroom), kitchen, living along with external terraces are placed on the first floor. A series of sculpted spaces on the second floor forms a solarium.

More details about the **minimalistic aesthetics** of this Villa can be found [here](#). Recent pictures of the Interior of this Villa can be found [here](#).



# Brief

Villa Savoye, originally designed as a house is now equivalent to a Temple for Architecture students and professionals alike and is currently open for visitors.

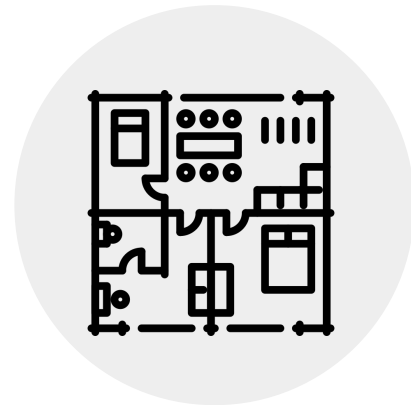
How can we maximize and make this monument more conducive to this new function? How can this Villa be made the next **Center for Architectural Knowledge**? Conversely, is it possible to retain its identity as a Machine for Living and yet be able to serve for the new purpose? And it goes without saying that in the process, the monument should not tamper.

[img\\_3](#): Axonometric view of the Villa  
Credits: Arch 1201- [Design Studio 3](#)



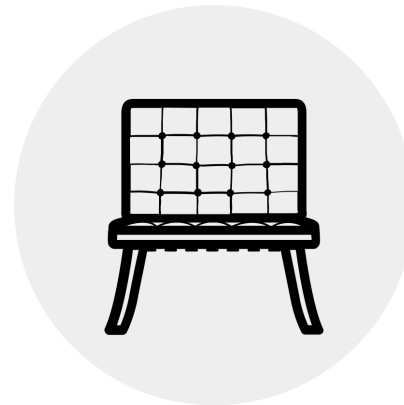
New additions in the complex for the visitors.

# Scope



## Planning

Site Planning, Circulation and Internal Layout needs to be thought of.



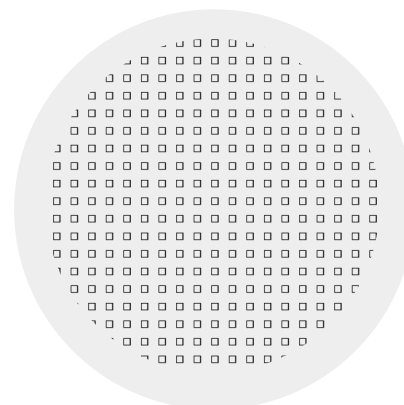
## Furniture

Furniture needs to be custom designed.



## Lighting

New Lighting Strategies need to be looked at for the changed use of space.



## Finishes

Internal Finishes can be changed to accommodate the new use.

The objective of this exercise is to **visualise Modernist ideas** for the contemporary world. The new interior can either be in agreement or challenge Corbusier's ideas in the context of today's technology and architecture. The respective stand taken should be justifiable by the participants.

Programmatically, the proposed fixes should allow for accommodating workshops, exhibitions, small conferences etc. for the visitors apart from the regular Villa Tours that it already offers. The participants are free to tweak the programs as per their understanding of how can this monument become a **Center for Architectural Knowledge**.



[Img\\_4](#): Approach path for Villa Savoye.

# Location

Villa Savoye is located in the western suburbs of Paris in Poissy. The approach to the Villa is designed imagining everyone would arrive in a car. Thus, originally the owner would take a ritualistic entrance by the car around the house between the 'pilotis' to approach it. However, with the changed function now, cars cannot be allowed inside. Thus, a new way for the approach and planning at the Site Level becomes key here.

# Submission

You have to deliver an architectural outcome on the following site, based on the given outlines.

- A maximum of 4 boards / sheets. – [ **2362px x 3544px** ] or [ **400mm x 600mm in 150 dpi** ] in portrait digital format (JPEG).
- Each image should be less than **15MB**
- You can find the preset PSD, AI and INDD template files in the 'additional resources folder' and [here](#).

**This additional resources folder contains:** FAQ Questions, High Res maps, Sketchup Model of the site and CAD file of the site plan.

Minimum requisites in the sheets are 3 sheets/boards + Cover image containing:

- Site plan (Compulsory)
- Key conceptual sections x 1 (Minimum)
- 3D views x 4
- Cover image/Thumbnail of size 2000 x 1000 px or larger in aspect ratio 2:1.
- Floor plans, images, sketches (if any) can be added to support the entry in the form of additional images.
- Answer 6 FAQ questions in the discussion section as given on the 'additional resources folder'.

- 
- + The team limit for this competition is 4 members maximum.
  - + Use exploded views to discuss multi levelled conceptual models better.
  - + Ensure that the final sheets which are submitted do not include your name or any other mark of identification.
  - + Mention sheet number on corner of every sheet.
  - + This is a design ideas challenge only. There is no built commission/realization is associated with the problem
  - + Plagiarism of any idea / form / design / image will be disqualified with a notice.

**Registration page here:** <http://competitions.uni.xyz>

**Submission Deadline: February 11, 2020**

Submission closes this day.

**Public Voting Starts: March 3, 2020**

Voting starts on this date.

**Public Voting ends: March 28, 2020**

Voting ends on this date.

**Result Announcement: April 09, 2020**

Result day!



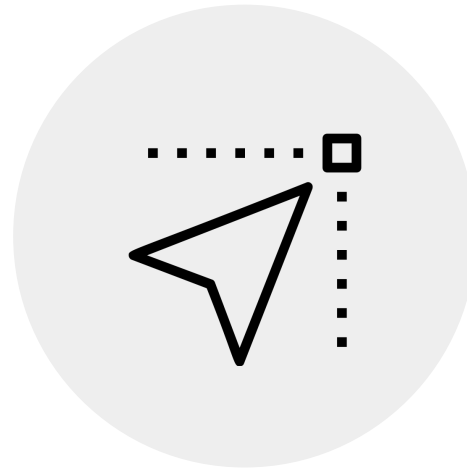
# Rewards



Grants of up to a total of **20,000\$** can be won on this challenge. Learn more about the full conditions on the competition page here.

# Judging Criteria

The entries will be judged by an international jury of the competition on the following criteria:



## Presentation

The fundamental to a good entry is a good presentation.



## Concept/Idea

Quality of thought and intent in pre-design phase.



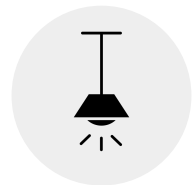
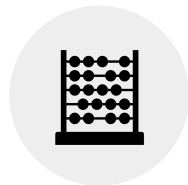
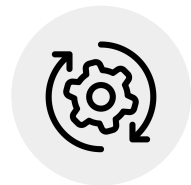
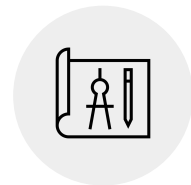
## Spaces/Programme

How the spaces are calculated and ordered.



## Design Output

The final architectural outcome of the solution.



The judging panel can also add other criteria based on their internal discussions. Participants are advised to fulfil above given criteria first in their design.

(Ad) Unist Subscription:

## Live fast. Compete hard.

Contemplating on various deadlines to participate? Think no more.

Unist Subscription™ is world's only premium pass to compete in various design competitions at a flat fare. Unist subscription is aimed to enable participants to compete better - faster - stronger in world class design challenges. You also save on various gateway charges and can make multiple teams for various challenges. Click to learn more.



## About



**BOUN** serves as a unit block for UNI in the field of urban design and furniture design. It serves as a platform for experimentation and conceptual exchange of ideas for urban furniture designs happening at various levels. The program intends to get designers from around the world and encourage them to share their extraordinary design ideas.

Through our urban/furniture design competition at BOUN, we intend to create a dialogue among designers where they have full freedom to create contextual and user-centric design. Our competition will identify and acknowledge young and budding designers from across the globe. This approach towards design would serve in refurbishing the profession's identity and will help the product to reach masses through our leading media and industry partners.

Queries: [support@uni.xyz](mailto:support@uni.xyz)

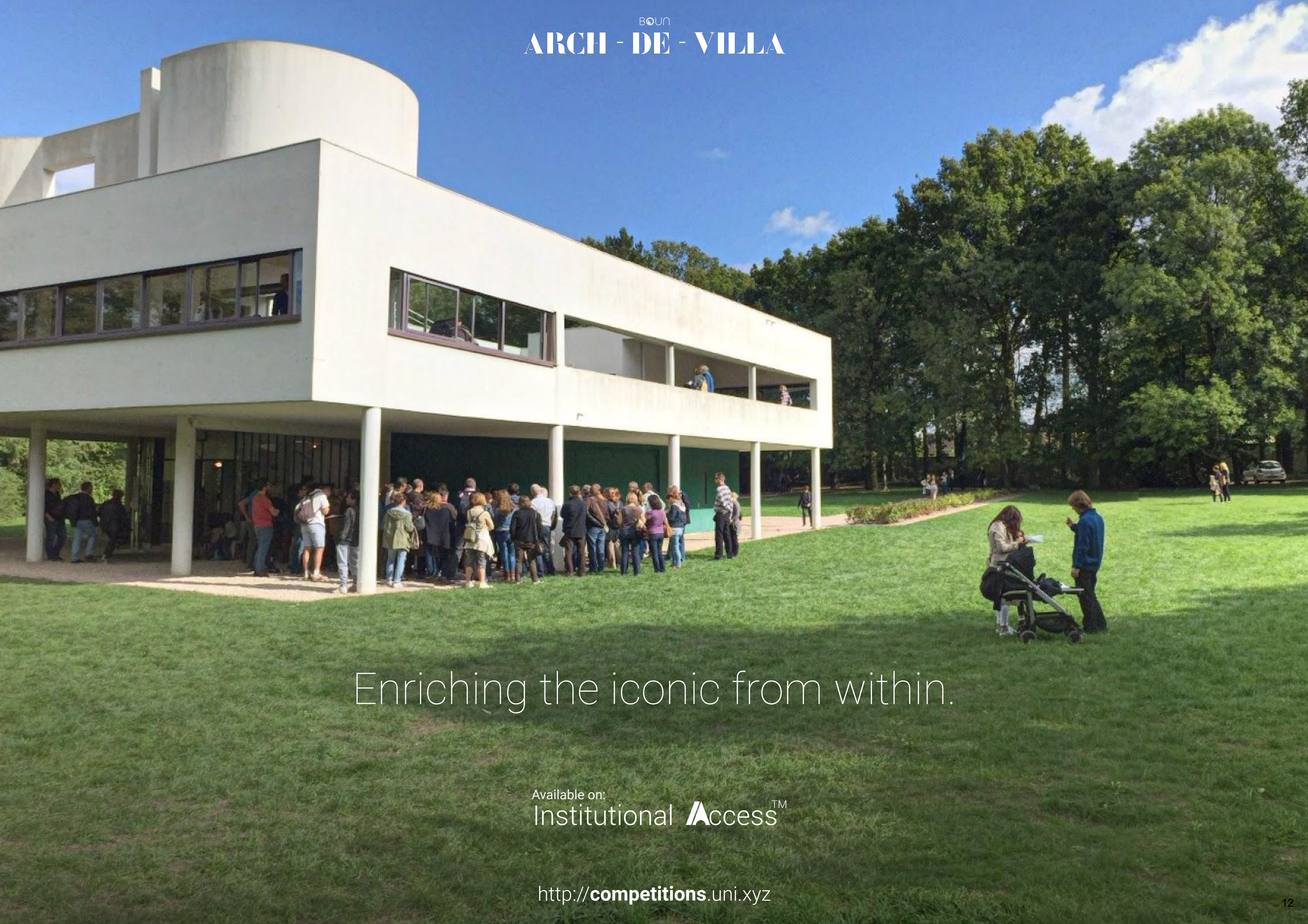
Discover other competitions: <https://competitions.uni.xyz>

Facebook: <https://www.facebook.com/unidesigntogether/>

Instagram: <https://www.instagram.com/uni.xyz/>

Discover FAQ's about this competition on our help forum here: <http://help.uni.xyz/>

BOUN  
ARCH - DE - VILLA



Enriching the iconic from within.

Available on:  
Institutional  Access™

<http://competitions.uni.xyz>