

UNI

Green-Retreat

Disconnecting from distress



Fig: 1 – Late work cultures a new normal - Illustration

Premise

Somewhere within the fast-paced world of today, we have lost touch with ourselves, and instead of trying to live our lives we all try to race and excel at something that is someone else's interest.

With all the work that comes with our lives, our health takes a back seat.

A lot of our lives have become sedentary and even those who are not, have lost the gratification it once gave, and in both cases, **work has taken a toll on our health.**

Vacation is a recent invention although not entirely alien, that the past couple of centuries have seen. It is an essential break taken from one's routine life to rejuvenate themselves from the wear and tear their work afflicts one with.

But as all good things come to an end; vacations have a limit to them too. **How can great architecture boost our vacation experiences?**



Fig: 2 - Definition of Burnout through Scrabble letters - Illustration

Stress-Balance

While goal chasing is an accepted reality in the world we live in, **it is not unusual to face something called burnout every now and then**. Be it anyone, kids – adults this phenomenon may occur across multiple age groups.

To vent this burn, a disconnect is needed which materializes itself in the form of a vacation. And hence, they straight away become the go-to destination for balancing out this daily wear day-to-day work causes on us.

But with an entire world population pushed to their limits with work, this collective travel can cause rupture to other things about the planet. Can vacation experiences enhance the places they are curated in? Can tourism ever be sustainable? Can retreats be more accountable for their ecological footprints?

While delivering great retreat experiences, can we sensitize people about their footprint on the planet?



Fig: 3 - Impact on camping sites - An illustration (Credits - Yourconroenews)

Issue

With this ever-rising demand for green getaways; many times, humans unknowingly ruin the existing and accessible ones. Which eventually poses a **threat to the untouched parts of nature that remain**. To go off-grid, one will only be left with so many places to set up a camp or have a picnic.

As humans, it is our responsibility to make it as harmless and untouched of a process as we can make it.

Several technologies, construction processes, and materials have been developed/evolving since the crisis of environmental decline came to attention. The push to achieve net-zero habitats hence took its shape to create impact less human habitats in the broader sense.

But with such an ambitious goal, net-zero buildings have a really huge challenge to mitigate **consumption, waste, and life cycle impact on a daily basis**.

How can we implement the same challenge on the architecture of a net-zero idea of a vacation?



Fig: 4 - The unadulterated nature - An impression of Alaska

Brief

The design challenge here is to create a net-zero off-grid retreat that is safe yet provides requisite necessities to balance nature with human life.

The retreat is expected to be planned in all aspects of how humans can be sensitized to living with nature, at the same time how it is planned right from its inception to its day-to-day running.

The participants are expected to pick at least 3 crucial facets which are prone to disrupt nature (for eg. energy, waste management, food consumption, materials used, construction process, etc.) while building or running such a retreat.

Net-zero, is a tough challenge to solve, and it can't be until engineering and architecture both come together to solve this issue. How can design help us move closer to net-zero at the same time define how holiday retreats to be really built in the years to come?

Objectives

Context - Solution relies on locally available resources, on the immediate environment, and on identifiable needs.

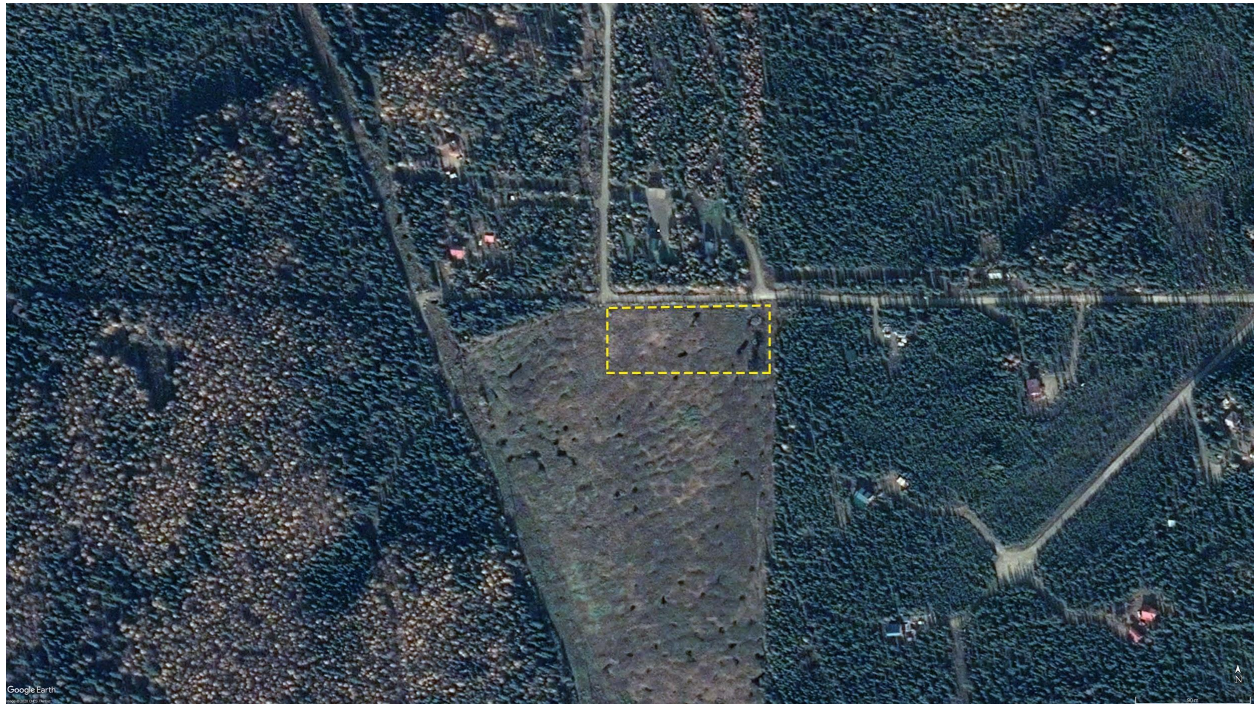
Form and Materiality - Apply form and materiality that is culturally and climatically appropriate even if unconventional.

Balance - Environmental, economic and social sustainability.

Net Zero Strategies - Incorporating traditional and unconventional technologies to move towards off-grid sustainability.

Site

The site is located in the outskirts of Fairbanks, Alaska. The site is close to the city of Fairbanks and conceived to be a weekend retreat for the inhabitants or campers. The design is expected to develop a framework of strategies that can be implemented in similar peripheral urban locations. Participants are expected to research and understand the climate, flora, fauna, availability of materials in the region before proceeding to the design.



Site area - ~**7289** sqm

FAR (Floor area ratio) - **0.25**

Ground coverage - **40%**

Height Restriction - **7m**

Coordinates - [Maps](#)

Spaces

The objective here is to design a retreat with a capacity of holding 30 units. A unit can be family-sized or couple, this distribution is up to the participants.

Common spaces to commune or to eat can also be provided within the limits. Design a cottage that's off-grid and is a net-zero structure.

The cottage's minimum requirements must be:

1. A living space
2. One bedroom with attached bathroom
3. A kitchenette
4. A patio/rooftop

Participants may add their own activities and allied services to develop this retreat. This can include service areas, common areas, open-air theatres, etc.

How to submit?

Read all the competition rules and details from the sidebar, and hit **register**. You can pay the entry fee and book your registration right away. The additional resources directly unlock as soon as you register on your dashboard. Once you are ready with your project - begin uploading from the dashboard and follow this tutorial to submit. You can add your team members to your project while submitting it.

Discover the full submission tutorial here: <https://to.uni.xyz/uploadtutorial>

Submission Requirements

You have to deliver an architectural design outcome on the following site, based on the given outlines.

1. Recommended number of sheets/presentation images/boards:
3 (Three) of size [2800px x 3500px] in portrait digital format (JPEG only).
2. Minimum 3 (Three) & No maximum sheet limit. Each image should be less than 15MB.
(Do not submit PNG format)
3. Minimum requisite submissions are sheets/boards + Cover image containing:
 - a. Site plan
 - b. 1 x Key concept section
 - c. 3D views x 4
 - d. Additional cover image of 2000px x 1000px
 - e. Write an article/story in the Journal section[#] of the project (of about 700-1000 words) answering the questions given in the guide pdf.

#Journal Section appears midway in the project submission portal. More instructions in the additional resources.

Additional Resources

This competition contains additional resources that contain a set of files useful to complete the competition submission. This folder is made available on your profile dashboard automatically as soon as you register.

This additional resource folder of this competition contains:

Submission Format files in PSD | AI | InDD & Guide to Journal Section + Questions, CAD site plan, High-resolution site maps, and Site images.

Learn more on <https://uni.xyz/competitions/green-retreat/info/about>

Base Rules

- + The competitions are open for students and professionals from all the disciplines of design.
- + The team limit for this competition is 4 members maximum per team.
- + You can register more than one team but they have to be registered separately.
- + Ensure that the final sheets submitted do not include your name or any other mark of identification.
- + Your submission is linked to your UNI user account which stands as your identification, we do not have any identification codes.
- + This is a design idea challenge only. There is no built commission/realization associated with the problem.
- + In case of publication in the yearbook we will reach out separately for selected entries.

Pro Tips

- + Use exploded views to discuss multi-leveled conceptual models better.
- + Mention sheet number on the corner of every sheet.
- + Plagiarism of any idea/form/design/image will be disqualified with a notice.
- + All the sheets or images will be viewed on a digital device. e.g. Laptop screen or projector. Uploaded sheets or images will not be physically printed for evaluation. The submission hence should be prepared for digital viewing only.
- + Submit JPEG images only. (PNG will not function)

Disqualification

The competition is protected by our [disqualification policy](#) to support fair play in a competitive environment like UNI. Participants are requested to stick to the details in the brief and connect with the curatorial committee on contact@uni.xyz in case of doubts or revisions.

Please check the link above for details. Failure to adherence may lead to soft or hard disqualification based on the violation.

Judging Criteria

The entries will be judged by an international jury of the competition on the following criteria:

Presentation: The fundamental to a good entry is a visual delivery of ideas.

Concept/Idea: Quality of thought and intent in the pre-design phase.

Programme/Spaces: How the spaces are conceived along with the programme.

Design Outcome The final architectural outcome of the solution.

The judging panel can also add other criteria based on their internal discussions - which will be in line with the problem statement. Participants are advised to fulfill the above-given criteria first in their design. Names of the jury panel will be announced soon.

Prizes / Deadlines / Registration

For complete information on active prizes and details on the entry fee, visit the **Awards & Fees** section of the competition here:- [Awards&Fees](#)

Learn more about this competition here: <https://uni.xyz/competitions/green-retreat/info/about>

Follow us on -

Facebook: <https://www.facebook.com/unidesigntogether>

Instagram: <https://www.instagram.com/uni.xyz>

Linked In: <https://www.linkedin.com/company/unidesigntogether/>

Twitter: <https://twitter.com/uniQxyz>