

UNI

**Secura**

Equitable shelter for security personnel on construction sites.



*Fig: 1 – Harsh-weather faced by service staff on site – An illustration*

# Premise

Vigiles Urbani was the force that used to guard the city of Rome and is said to be the origin of today's security guards.

Security guards were called watchmen during medieval times and them forming a company to serve people by protecting their properties was invented in the 1850s by Allan Pinkerton.

For ages, their roles have been of significance from protecting important personnel to protecting possessions and without their contribution, a lot of our history would have been lost

---

They risk their lives in ways that might not seem significant and their sacrifices go unnoticed often. They change shifts and spend half the day working and the other half rests. It is our responsibility to provide them an efficient work shelter.

---

**Of the several ways their lives can be made easier and efficient, projects often put their station design on the back burner and let it affect the way they function and their health too.**



*Fig: 2 – A cost comparison of a security cabin on construction site v/s the site they are safeguarding – An illustration*

# Optimization

Today the living conditions and working conditions of these unsung heroes have slowly become sub-par as people who procure these units think of them as an afterthought. It's even worse at times for security personnel guarding a spot temporarily, like construction sites / a vacant land where there are no ancillary services to rely upon.

It can be safely said, that their safety and the safety of those whose responsibility lies in their hands are at risk when these guards are worn-down without spaces for proper rest or breaks.

**Project scales vary all the time, and so does the geographic location or budget, but is that an excuse worth stating the under-thought design of a security booth?**

Why does this space have to be an efficiency problem every time where we expect them to adjust at the same time spending millions on construction projects who they are guarding?

**If budget is an issue of serving poor design the masses, can good design work through these constraints?**

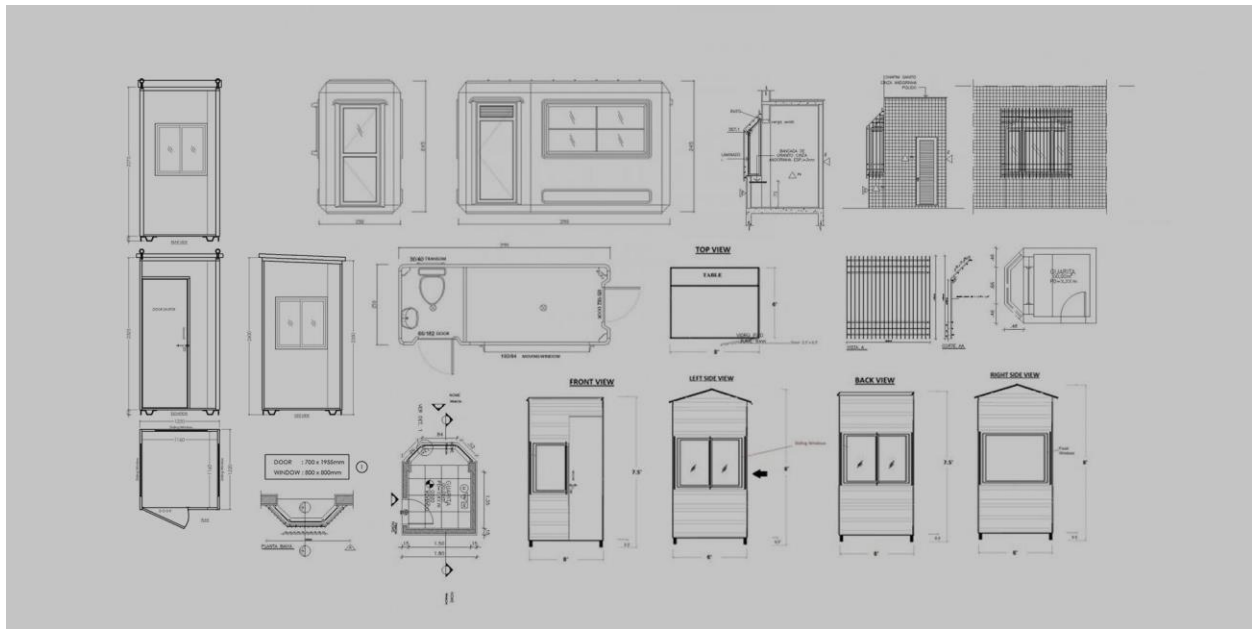


Fig: 3 – A generic security cabin design outcome – An illustration

# Brief

If cost is the excuse, let's find a way to negotiate it with good design.

**The challenge here is to design a compact and safe 4m x 2m x 2.5m security cabin/guardhouse that can be built near construction sites and can be dismantled and relocated when needed. The cabin is procured at a lease/rental for project tenure and sent back once its job is complete.**

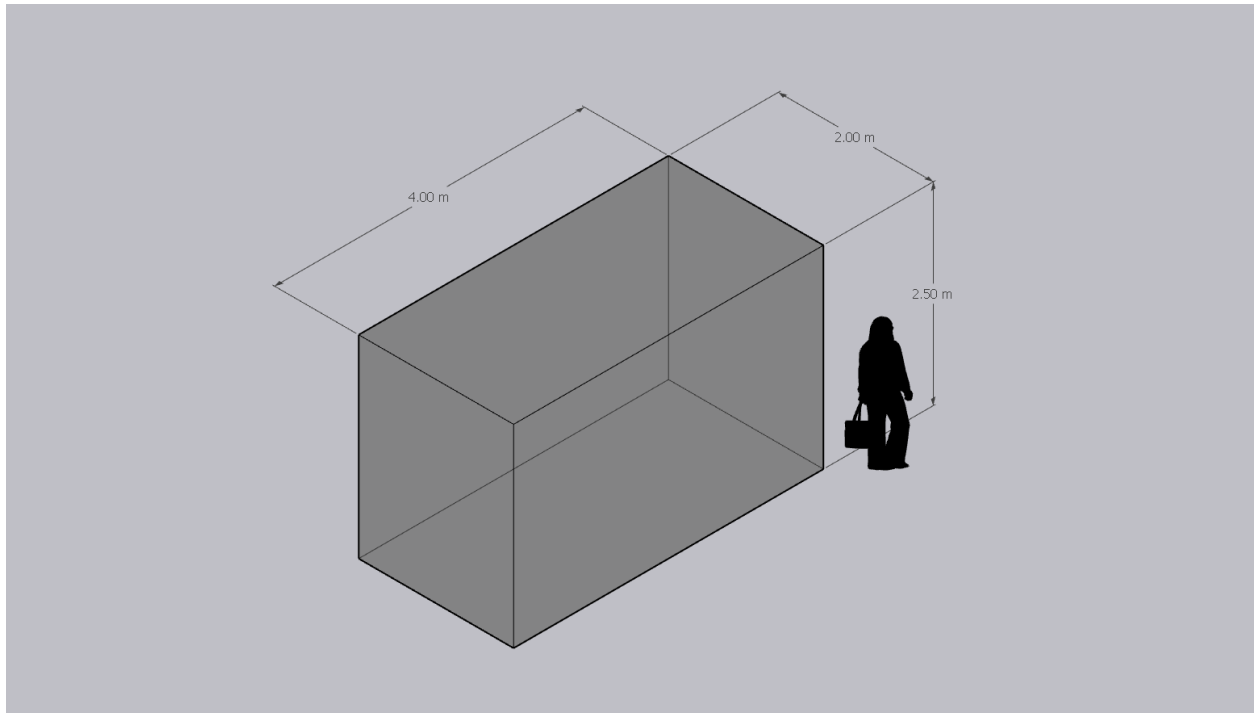
The aim of this exercise is to deliver a universal design regardless of the project budget. The design does not imply to induce riches or costly comfort, but rather bringing more dignity to the daily lives of this security personnel.

Space can be situated in any site or project that would require a security cabin of that scale. Material selections/configurations are kept unrestrained for this challenge and are placed on participants to freeze these based on the above premise.

# Objectives

1. **Function:** The security cabin is mostly for day use, but can be used as a night shelter incase the deployment is somewhere remote.
2. **Robust:** The design should withstand assembly/disassembly while being structurally robust when moving it from one site to another.
3. **Positioning:** Functionality over aesthetics, and should not become another element for security personnel to protect.
4. **Incremental:** The design should allow upgrades or future services to be a part of this security cabin.

# Volume



The site can be at any construction site of your familiarity. The challenge will involve understanding the issues, daily life, and work security personnel are subjected to. The cabin should contain a toilet. The location can be on the entrance, right next to a site or any other location that requires oversight. While design delivery, ensure that a broad context of they're being installed is discussed.

**Length:** 4.0 m

**Breadth:** 2.0 m

**Height:** 2.5m

# How to submit?

Read all the competition rules and details from the sidebar, and hit **register**. You can pay the entry fee and book your registration right away. The additional resources directly unlock as soon as you register on your dashboard. Once you are ready with your project - begin uploading from the dashboard and follow this tutorial to submit. You can add your team members to your project while submitting it.

Discover the full submission tutorial here: <https://to.uni.xyz/uploadtutorial>

---

# Submission Requirements

You have to deliver a modular security station outcome within the following volume, based on the given outlines.

1. Recommended number of sheets/presentation images/boards:  
**3 (Three) of size [2800px x 3500px] in portrait digital format (JPEG only).**
2. Minimum 3 (Three) & No maximum sheet limit. Each image should be less than 15MB. (Do not submit PNG format)
3. Minimum requisite submissions are sheets/boards + Cover image containing:
  - a. Floor plan
  - b. 1 x Key concept section
  - c. 3D views x 4
  - d. Additional cover image of 2000px x 1000px
  - e. Write an article/story in the Journal section# of the project (of about 700-1000 words) answering the questions given in the guide pdf.

#Journal Section appears midway in the project submission portal. More instructions in the additional resources.

## Additional Resources

This competition contains additional resources that contain a set of files useful to complete the competition submission. This folder is made available on your profile dashboard automatically as soon as you register.

This additional resource folder of this competition contains:

**Submission Format files in PSD | AI | InDD, Volume of intervention in Sketchup format & Guide to Journal Section + Questions**

Learn more on <https://uni.xyz/competitions/secura/info/about>

# Base Rules

- + The competitions are open for students and professionals from all the disciplines of design.
- + The team limit for this competition is 2 members maximum per team.
- + You can register more than one team but they have to be registered separately.
- + Ensure that the final sheets submitted do not include your name or any other mark of identification.
- + Your submission is linked to your UNI user account which stands as your identification, we do not have any identification codes.
- + This is a design idea challenge only. There is no built commission/realization associated with the problem.
- + In case of publication in the yearbook we will reach out separately for selected entries.

# Pro Tips

- + Use exploded views to discuss multi-leveled conceptual models better.
- + Mention sheet number on the corner of every sheet.
- + Plagiarism of any idea/form/design/image will be disqualified with a notice.
- + All the sheets or images will be viewed on a digital device. e.g. Laptop screen or projector.

Uploaded sheets or images will not be physically printed for evaluation. The submission hence should be prepared for digital viewing only.

- + Submit JPEG images only. (PNG will not function)

# Disqualification

The competition is protected by our [disqualification policy](#) to support fair play in a competitive environment like UNI. Participants are requested to stick to the details in the brief and connect with the curatorial committee on [contact@uni.xyz](mailto:contact@uni.xyz) in case of doubts or revisions.

Please check the link above for details.

Failure to adherence may lead to soft or hard disqualification based on the violation.



# Judging Criteria

The entries will be judged by an international jury of the competition on the following criterions:

**Presentation:** The fundamental to a good entry is a visual delivery of ideas.

**Concept/Idea:** Quality of thought and intent in the pre-design phase.

**Programme/Spaces:** How the spaces are conceived along with the program.

**Design Outcome:** The final architectural outcome of the solution.

The judging panel can also add other criterions based on their internal discussions - which will be in line with the problem statement. Participants are advised to fulfill the above-given criterions first in their design.

## Prizes / Deadlines / Registration

For complete information on active prizes and details on the entry fee, visit the **Awards & Fees** section of the competition here:- [Awards&Fees](#)

Learn more about this competition here: <https://uni.xyz/competitions/secura/info/about>

Follow us on -

Facebook: <https://www.facebook.com/unidesigntogether>

Instagram: <https://www.instagram.com/uni.xyz>

Linked In: <https://www.linkedin.com/company/unidesigntogether/>

Twitter: <https://twitter.com/uniQxyz>