

UNI

# Throned

Rethinking public toilets



*Fig: 1 – Toilets – Something we don't talk about but they are everywhere - An illustration*

## Premise

We all love to attend carnivals and other events in outdoor open areas, go camping, or so on, but the one comfort that we miss from back home is our toilet privileges! The invention of toilets came about as people required a safe and hygienic space to defecate, instead of doing it in the open. In 1596, the first **flush toilet** was invented and has been in widespread usage even today.

---

Since the early ages, toilets have taken different forms from being a simple hole in the ground to chambers and now, **to automated ones**. While toilets fulfill a basic need, there is scope for design and variation that can be brought about in the space they are placed in, to create

---

Toilets and washrooms in residences receive special treatment, wherein this small space is equipped with many additional services, almost **making the facility a luxury for its users. But when it comes to toilets in the public realm, efforts made to provide comfortable and efficient solutions have been lacking.**

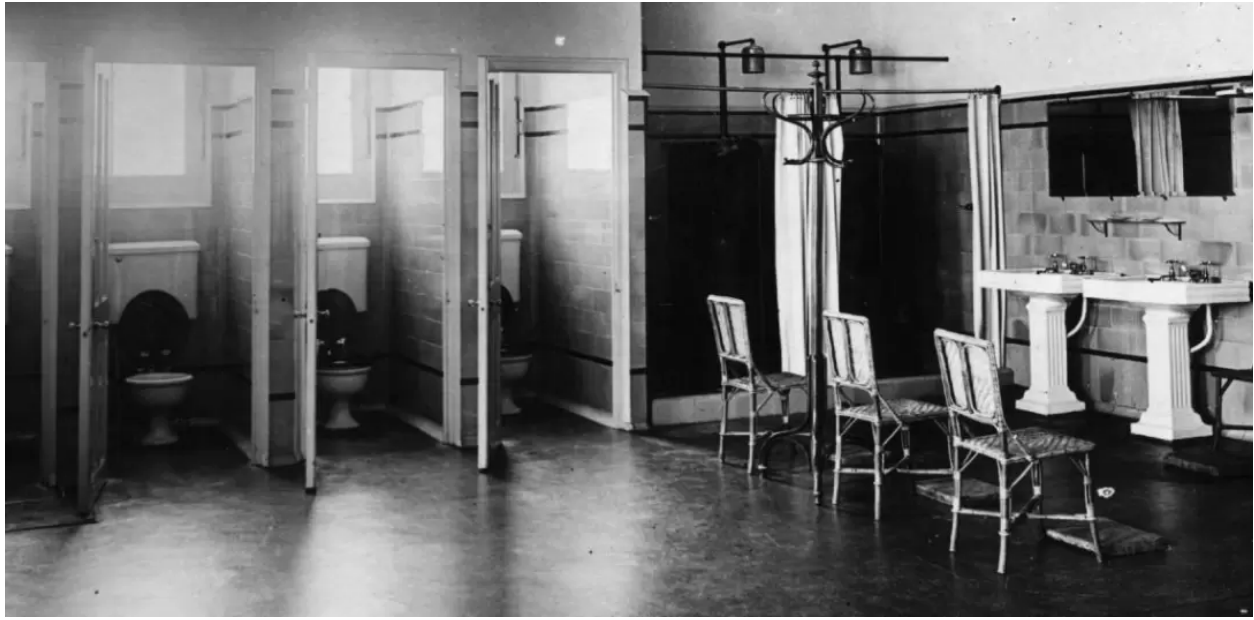


Fig: 2 - A public women's room circa 1950. | (Hulton Archive)

## Concept

Public toilets were invented in ancient Rome as just a cluster of holes, with seats lined against a wall, where men sat and talked. These spaces were feared since they were prone to fires and rodents. Fast forward to the 1850s, during the great exhibition shows, where the concept of flush toilets was introduced and they became a **commercial commodity**, in the following year.

Today we have better versions of these public toilets, both single and multiple capacity. The single occupancy, **portable toilets are used in large numbers, during outdoor events, in remote tourist spots, or in slum areas, where access to hygienic, city public toilets may be limited.**

---

Portable toilets can accommodate one person anthropometrically and are **self-contained**. They are functional, **but its design scale is restricted due to mobility constraints, which may make the occupant feel claustrophobic and uncomfortable.**

---

**How can the design of public toilets be improved?**



*Fig: 3 – A modular toilet - An engineering solution*

## Brief

Public toilets are often viewed as functional entities that are **not particularly appealing or hygienic**. This image of the public toilet can be changed by improving its **efficiency and comfort**.

---

**Brief: Propose a new design for a portable toilet for 5 simultaneous occupancy stalls that can be used by any type of user, with ease.** Anticipation of additional needs of certain occupants must be done. Resources on site like daylight and passive ventilation techniques can be used to enhance the quality of the design of the stall. The maintenance and upkeep are also important facet participant should look at.

---

The aim of the design is to understand how the design of even the most functional unit of space can be enhanced with thoughtful inputs. **The portability or mobility of this toilet stall is the most important factor.** The **effort needed in transportation** and its technical details is to be included in the proposal.

# Objectives

**Access:** The toilet stall must be accessible to disabled people with a barrier-free design.

**Modular:** The designed stall must be easy to fabricate, and can be manufactured in large numbers.

**Services:** It must be equipped with services for self-containment. Additional equipment can be installed by justifying its need.

**Sustainability:** Energy-efficient and eco-friendly choices must be made, using natural resources.

**Image:** the lighting and material choice can be used to change the look to be more inviting.

# Scale

The module size of a single stall is restricted to **1.3m x 1.3m x 2.4m**. Participants can use this module size and replicate it multiple times for various conditions and scenarios. The submission looks at creating a set of 5 stalls and related elements like the basin, circulation, mirror, etc. within the collective unit comprising several modules in the given size above.

# How to submit?

Read all the competition rules and details from the sidebar, and hit **register**. You can pay the entry fee and book your registration right away. The additional resources directly unlock as soon as you register on your dashboard. Once you are ready with your project - begin uploading from the dashboard and follow this tutorial to submit. You can add your team members to your project while submitting it.

Discover the full submission tutorial here: <https://to.uni.xyz/uploadtutorial>

---

# Submission Requirements

You have to deliver an architectural design outcome on the following site, based on the given outlines.

1. Recommended number of sheets/presentation images/boards:  
**3 (Three) of size [2800px x 3500px] in portrait digital format (JPEG only).**
2. Minimum 3 (Three) & No maximum sheet limit. Each image should be less than 15MB. (Do not submit PNG format)
3. Minimum requisite submissions are sheets/boards + Cover image containing:
  - a. Site plan
  - b. 1 x Key concept section
  - c. 3D views x 4
  - d. Additional cover image of 2000px x 1000px
  - e. Write an article/story in the Journal section# of the project (of about 700-1000 words) answering the questions given in the guide pdf.

#Journal Section appears midway in the project submission portal. More instructions in the additional resources.

## Additional Resources

This competition contains additional resources that contain a set of files useful to complete the competition submission. This folder is made available on your profile dashboard automatically as soon as you register.

This additional resource folder of this competition contains:

**Submission Format files in PSD | AI | InDD & Guide to Journal Section + Questions**

Learn more on: <https://uni.xyz/competitions/throned/info/about>

<https://uni.xyz/competitions>

# Base Rules

- + The competitions are open for students and professionals from all the disciplines of design.
- + The team limit for this competition is 4 members maximum per team.
- + You can register more than one team but they have to be registered separately.
- + Ensure that the final sheets submitted do not include your name or any other mark of identification.
- + Your submission is linked to your UNI user account which stands as your identification, we do not have any identification codes.
- + This is a design idea challenge only. There is no built commission/realization associated with the problem.
- + In case of publication in the yearbook we will reach out separately for selected entries.

# Pro Tips

- + Use exploded views to discuss multi-leveled conceptual models better.
- + Mention sheet number on the corner of every sheet.
- + Plagiarism of any idea/form/design/image will be disqualified with a notice.
- + All the sheets or images will be viewed on a digital device. e.g. Laptop screen or projector. Uploaded sheets or images will not be physically printed for evaluation. The submission hence should be prepared for digital viewing only.
- + Submit JPEG images only. (PNG will not function)

# Judging Criteria

The entries will be judged by an international jury of the competition on the following criterions:

**Presentation:** The fundamental to a good entry is a visual delivery of ideas.

**Concept/Idea:** Quality of thought and intent in the pre-design phase.

**Details:** How the details are conceived in line with the competition brief.

**Design Outcome** The final architectural outcome of the solution.

The judging panel can also add other criterions based on their internal discussions - which will be in line with the problem statement. Participants are advised to fulfill the above-given criteria first in their design. Names of the jury panel will be announced soon.

# Disqualification

The competition is protected by our [disqualification policy](#) to support fair play in a competitive environment like UNI. Participants are requested to stick to the details in the brief and connect with the curatorial committee on [contact@uni.xyz](mailto:contact@uni.xyz) in case of doubts or revisions.

Please check the link above for details. Failure to adherence may lead to soft or hard disqualification based on the violation.

# Prizes / Deadlines / Registration

For complete information on active prizes and details on the entry fee, visit the Awards & Fees section of the competition here:- [Awards&Fees](#)

.

Learn more about this competition here: <https://uni.xyz/competitions/throned/info/about>

Follow us on -

Facebook : <https://www.facebook.com/unidesigntogether>

Instagram: <https://www.instagram.com/uni.xyz>

Linked In: <https://www.linkedin.com/company/unidesigntogether/>

Twitter: <https://twitter.com/uniQxyz>